

Use of prefabricated facades in a social housing project

Le Foyer Bruxellois – De Brusselse Haard

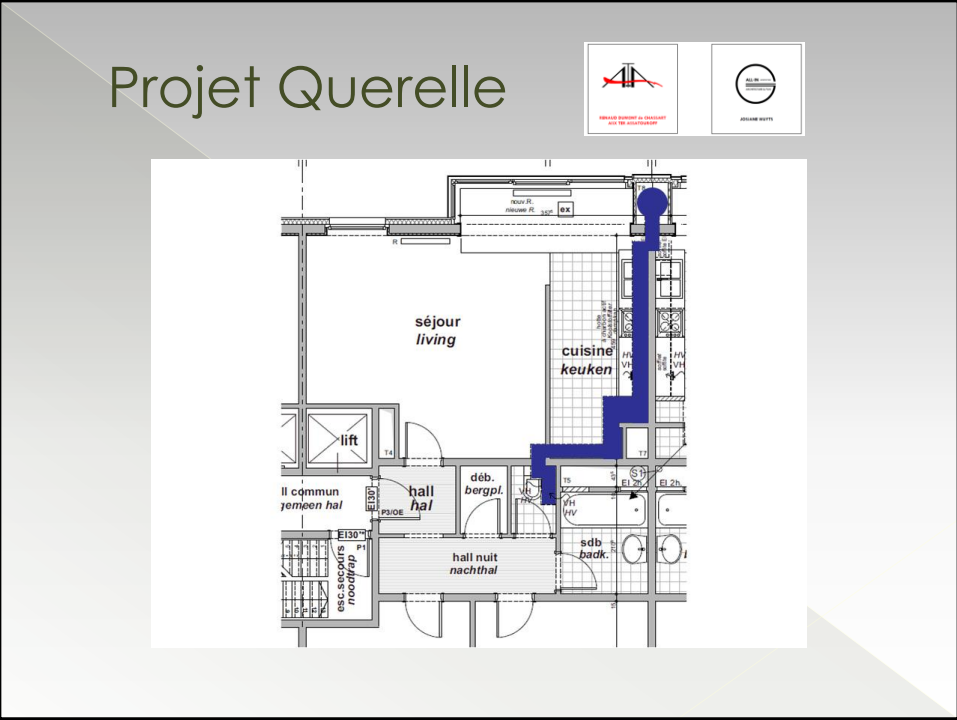
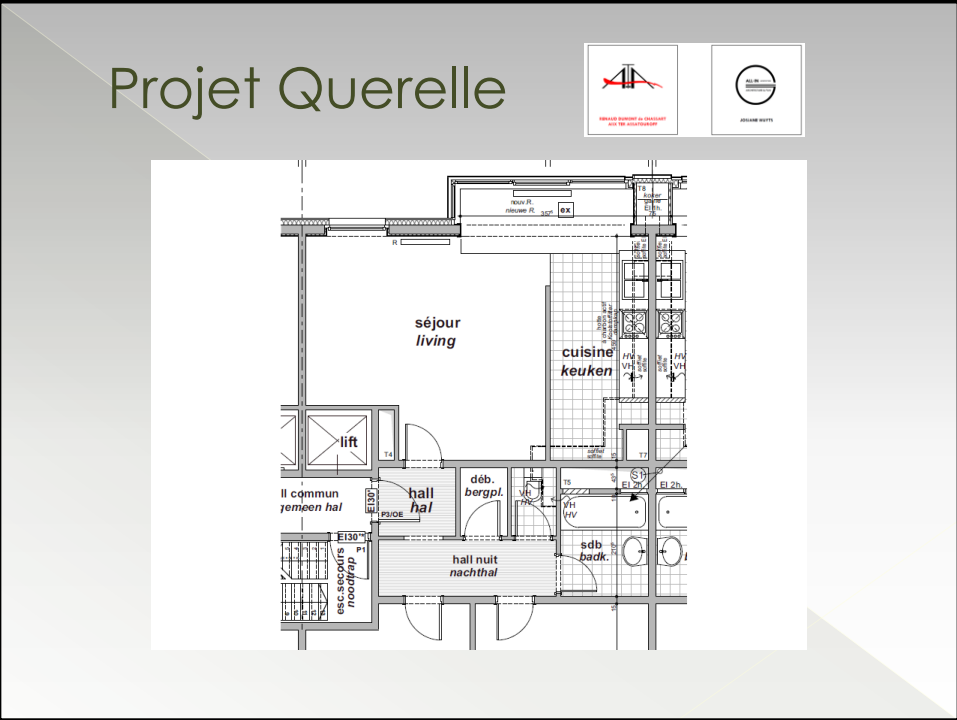
Introduction



Résumé

Le Foyer Bruxellois	<ul style="list-style-type: none">• Qui sommes-nous ?• Objectifs• Moyens
Politique d'investissements	<ul style="list-style-type: none">• Le problème• Priorités• Stratégie : 3 modes
Evolution de la philosophie	<ul style="list-style-type: none">• 2 exemples• Approche• Un défi !





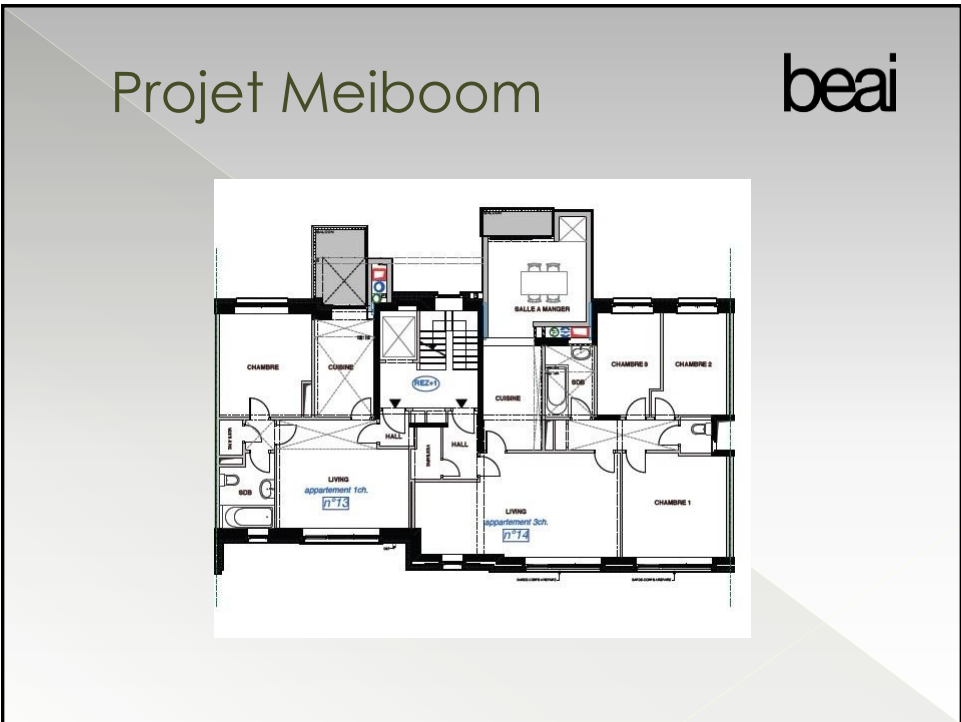
Projet Querelle

The image displays architectural drawings for 'Projet Querelle'. It features a large facade elevation showing a multi-story building with a central vertical element and a grid of windows. Below this is a floor plan showing a central circular feature. To the right, there is a smaller elevation drawing and a detailed technical specification table with various columns and rows of text.

Projet Meiboom




beai

The image shows a floor plan for 'Projet Meiboom' within 'BLOC 2'. The plan is divided into two apartment units, 'Appartement Ich' (77.3) and 'Appartement Jich' (77.4). Rooms are labeled: 'CHAMBRE' (bedroom), 'CUISINE' (kitchen), 'LIVING', 'SDB' (bathroom), and 'HALL'. A red double-headed arrow labeled 'B' indicates a section line. Dimensions and block information are provided at the bottom.





Approche

- 
 - Exécution plus rapide
 - Réduction des coûts
 - Réduction des interventions en logements occupés
 - Réduction des problèmes d'accès aux logements
 - Réduction du risque d'arrêt et de revendication €
 - Facilitation de l'entretien
 - Facilitation des phases ultérieures de rénovation
- 
 - Exemples à l'esthétique peu convaincante !
- 
 - Possibilité d'une expression architecturale adaptée au logement et valorisante ?
 - Adaptation aux configurations d'immeubles complexes ?

